



Hello, Orlando.

Brightline Orlando Station

Connecting Central Florida to South Florida, Brightline Orlando Station is meticulously designed and built through the lens of today's modern traveler.

Brightline Orlando Station is located inside Orlando International Airport (MCO) adjacent to Terminal C.

10705 Jeff Fuqua Blvd. South, Orlando FL 32827

Orlando Station | **37,350 sq. ft.**

PREMIUM Lounge

2,812 sq. ft.

SMART Lounge

2,853 sq. ft.

MRKT Place retail space

250 sq. ft.

Conference room

623 sq. ft.

AMENITIES

**Signature
Mary Mary
Bar.**



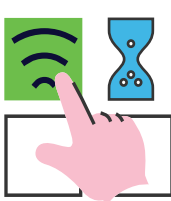
**4 self-service
kiosks.**



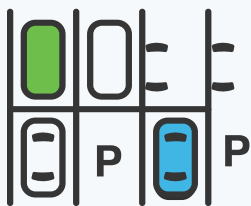
**Security
screening
area.**



**High-speed
WiFi.**



**350 parking
spaces.**



**BrightKids
play area.**



1,000

foot long train
platforms – two
platforms each as long
as the Eiffel Tower.

87

TV screens
throughout the
station.

78,000

LED diodes light up the
entrance wicket.

192

pieces click away
on the split-flap
departures board.

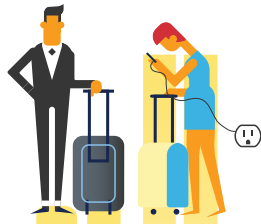


Station illuminated by spot lights used
in movie studio sets in California.

A variety of custom drinks
served in seconds by Mary
Mary On Demand in the
PREMIUM Lounge.

486

power outlets
throughout
the station.



An automated Shuttle Link between
airport Terminals A and B in under

5 minutes.

On Track to Orlando

January 2022:

Construction began on the
build out of the station.

April 2023:

Station construction complete.

May 2023:

Launch of ticket sales.

September 2023:

Brightline Orlando
open for service.



Ready to go?

Follow @gobrightline and Sign up for updates at GoBrightline.com/Orlando.